

# ***LAKESIDE***



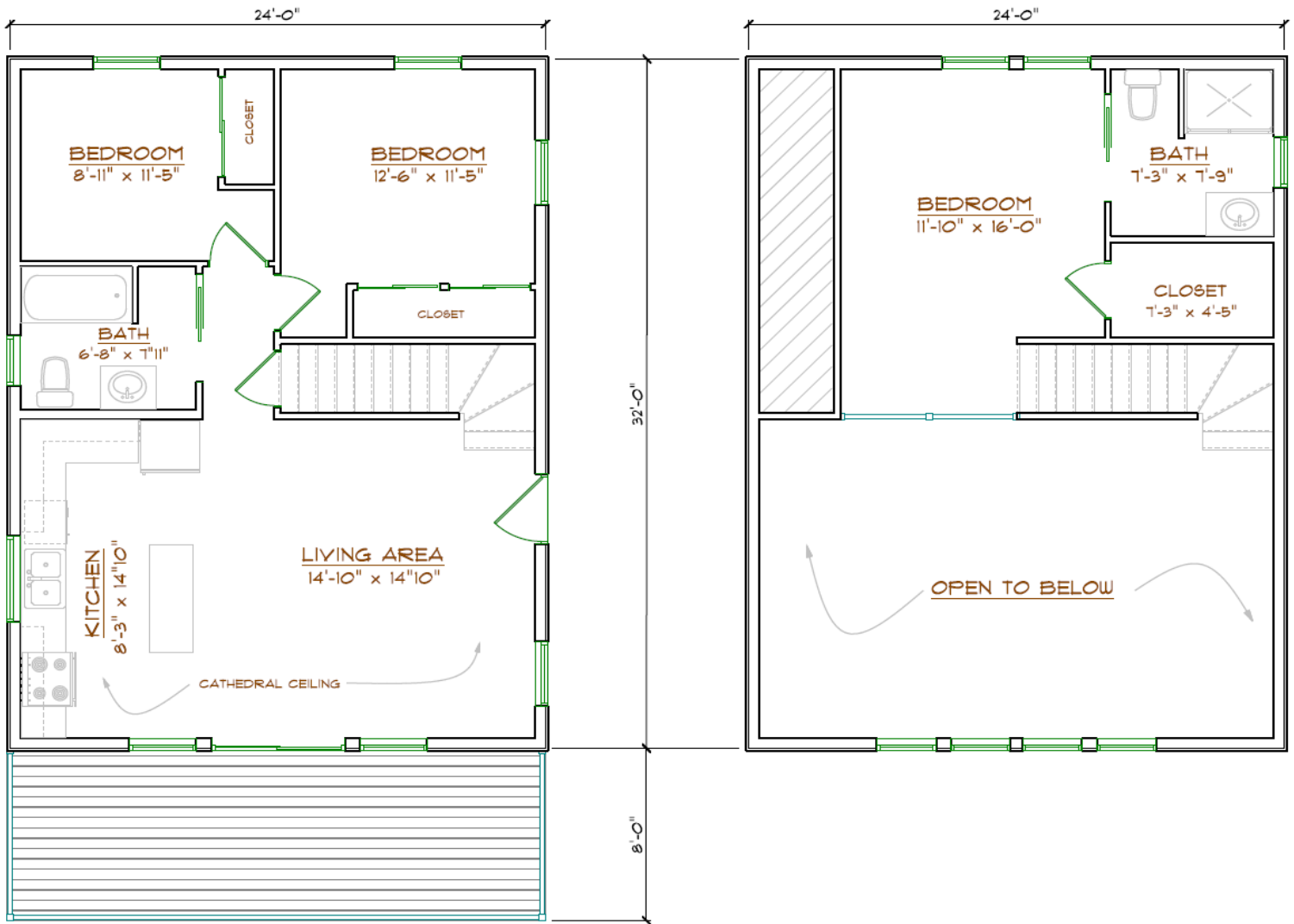
*1043 Square Feet  
3 Bedroom  
2 Bath*

# LAKE SIDE

1043 Square Feet  
3 Bedrooms  
2 Bath

The Lakeside  
Lower Floor Plan  
768 Sq. Ft.

The Lakeside  
Upper Floor Plan  
275 Sq. Ft.



**Note:** Plans, illustrations and photographs may show features not included with the model. The plans and/or specifications are subject to change without notice.

**A** MAINE CEDAR  
**LOG HOMES**  
L. C. ANDREW Since 1926

33 Main Street (Route 202), Windham, Maine 04062  
Tel. (800) 427-5647 or (207) 892-8561  
Fax. (207) 892-8563  
www.maine cedarloghomes.com

*This chalet style home has a lot to offer for its modest size. You enter into the open living, dining and kitchen areas, with cathedral ceilings and loft above; continue from the first floor hallway to a bath and two spacious bedrooms, with a master suite on the second floor. This home design maximizes floor space, and is cozy and comfortable, yet open. The gliding door, along with the windows above, provides an abundance of natural light, and leads you to a large deck for sitting and relaxing. For those who desire a spacious floor plan in a small footprint, this could be the model for you. We would be happy to customize this design to fit your needs and lifestyle.*

*The Smart Choice*