

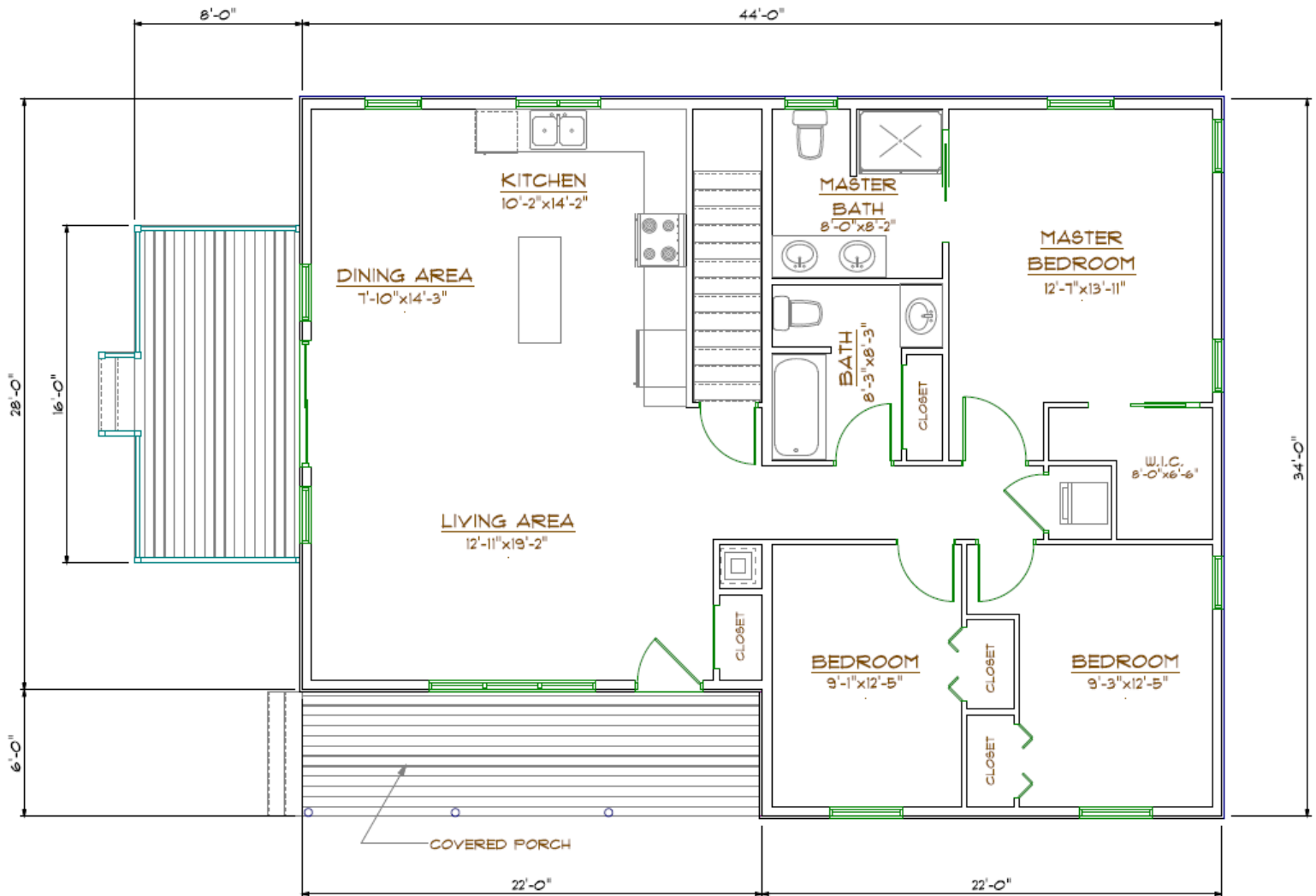
FLAGSTAFF



*1364 Square Feet
3 Bedroom
2 Bath*

FLAGSTAFF

1364 Square Feet
3 Bedrooms
2 Bath



Flagstaff
Main Floor Plan
1364 Sq. Ft.

Note: Plans, illustrations and photographs may show features not included with the model. The plans and/or specifications are subject to change without notice.

A MAINE CEDAR
LOG HOMES
L. C. ANDREW
Since 1926

33 Main Street (Route 202), Windham, Maine 04062
Tel. (800) 427-5647 or (207) 892-8561
Fax. (207) 892-8563
www.maine cedarloghomes.com

This ranch style home is similar to our Rangeley model, but with additional character and having the bedroom and bath areas in the ell. Still has a great use of floor space, cozy and comfortable, with an open feel and plenty of natural light. As you enter from the covered porch through the entry door of this home, you will see cathedral ceilings above the open concept living, dining and kitchen areas. The gliding door will draw in the outdoors and allow access to the deck for enjoying nature. The hallway will lead you to the master bedroom and bath along with two other bedrooms and guest bath. For those who wish for spacious single floor living, this is a great floor plan. We would be happy to customize this design to fit your needs and lifestyle.

The Smart Choice