

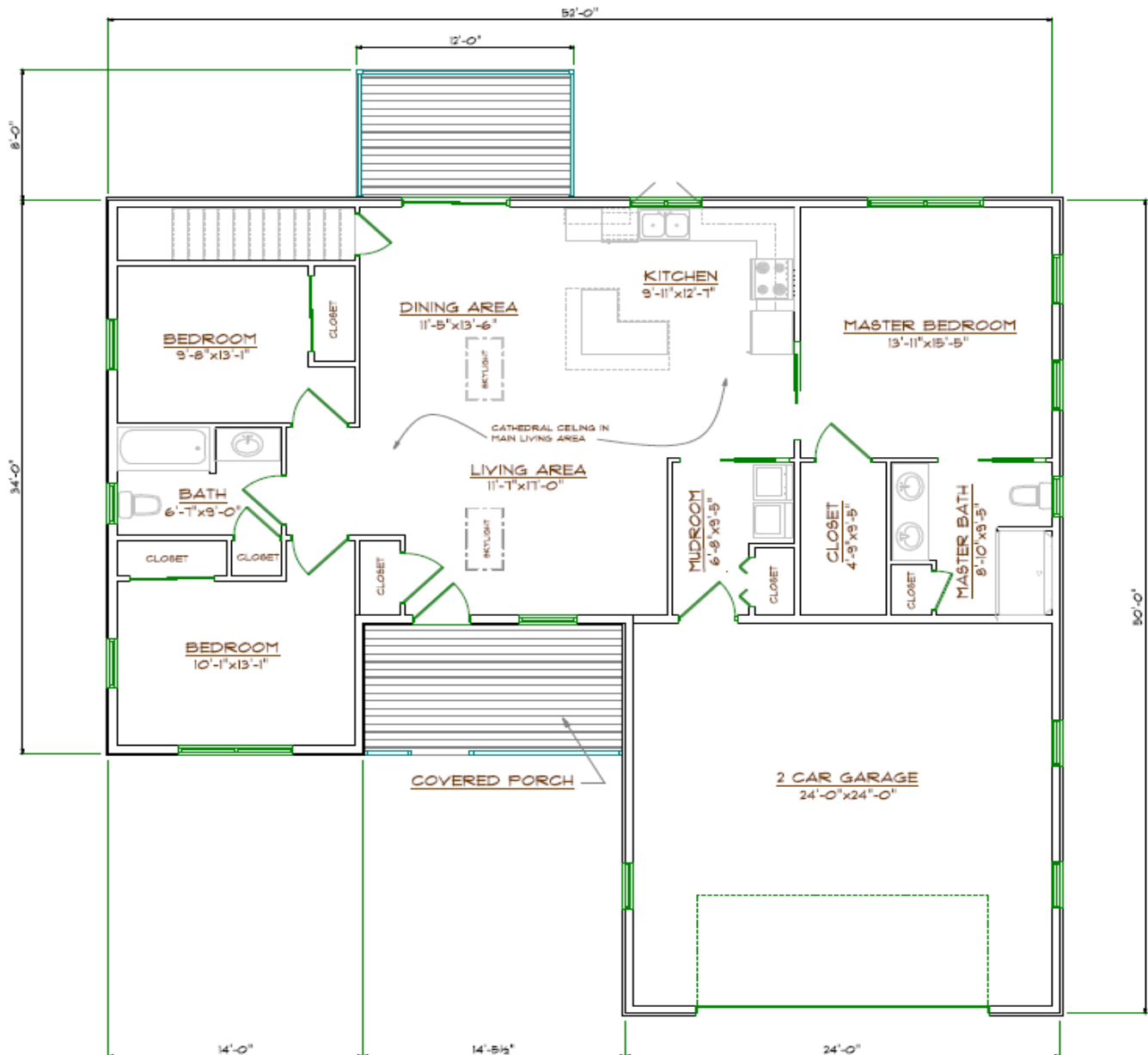
CAMDEN



1464 Square Feet
3 Bedroom
2 Bath

CAMDEN

1464 Square Feet
3 Bedrooms
2 Bath



THE CAMDEN
MAIN FLOOR PLAN
1464 SQ. FT.

Note: Plans, illustrations and photographs may show features not included with the model. The plans and/or specifications are subject to change without notice.

AL MAINE CEDAR LOG HOMES
L. C. ANDREW Since 1926

33 Main Street (Route 202), Windham, Maine 04062
Tel. (800) 427-5647 or (207) 892-8561
Fax. (207) 892-8563
www.maine cedarloghomes.com

This ranch-style home has character inside and out; as you enter from the covered porch, you'll enjoy the open living, dining and kitchen areas with vaulted ceilings above. There is a spacious master suite on one end, with two bedrooms and bath on the other end of the home, and an attached two-car garage. It is designed with a great use of floor space; is cozy and comfortable, yet has an open-concept feel and plenty of natural light. The gliding door will draw in the outdoors and allow access to the deck for relaxing with nature. For those who desire spacious single floor living with a garage, this is truly a great floor plan. We would be happy to customize this design to fit your needs and lifestyle.

The Smart Choice