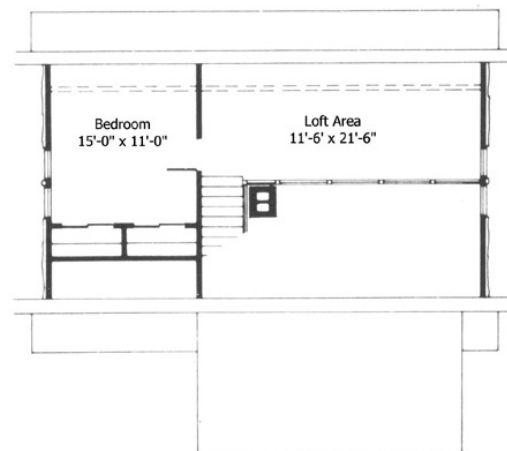
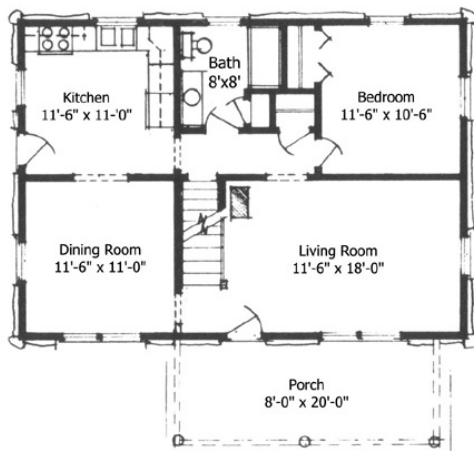


THE BRISTOL

24' x 34' with 8' x 20' porch
living area: 1,230 sf



The clean, uncomplicated lines of the Bristol invite those who seek a more simple lifestyle. Sit on your front porch and enjoy the freedom your Bristol's maintenance - free exterior provides. Featuring two bedrooms, dining room and spacious living room with open cathedral ceiling, the Bristol's ideal for a centrally located wood stove. The Bristol's outstanding design makes it at home in any setting. The adaptable home from L.C. Andrew - Maine Cedar Log Homes. With a dormer, the loft area can transformed to another bedroom and a bath. With other changes the second floor could include three bedrooms and bath—similar to the Monhegan.



*The plans and illustration may show features not included with the standard model.
The plans and/or specifications are subject to change without notice.*

L.C. ANDREW-MAINE CEDAR LOG HOMES . . . the smart choice